

Summer & Fall 2022 CLASS SCHEDULE

23

Kalie Brunton

From student to teacher



Registration begins for summer & fall
Community Ed: May 2 | Credit classes: May 16

2



**COLUMBIA GORGE
COMMUNITY COLLEGE**

CALENDAR

- MAY 2**
Registration begins for summer community education classes
- MAY 16**
Registration begins for summer and fall credit classes
- MAY 27**
Last day to withdraw from 11 week spring classes*
- MAY 30**
Memorial Day Holiday (college closed)
- JUNE 17**
Spring term ends
- JUNE 17**
Graduation
- JUNE 20**
Juneteenth Holiday observed (college closed)
- JUNE 22**
Spring term grades available online
- JUNE 27**
Summer classes begin
- JULY 1**
Last day to drop with tuition refund for 8-11 week summer classes*
- JULY 4**
Independence Day Holiday (college closed)
- JULY 5**
Summer late fees begin
- AUGUST 19**
Last day to withdraw from 11 week summer classes*
- SEPTEMBER 5**
Labor Day Holiday (college closed)
- SEPTEMBER 9**
Summer term ends
- SEPTEMBER 14**
Summer term grades available online
- SEPTEMBER 26**
Fall classes begin
- SEPTEMBER 30**
Last day to drop with tuition refund for 8-11 week fall classes*
- OCTOBER 3**
Fall late fees begin
- NOVEMBER 11**
Veterans Day Holiday (college closed)
- NOVEMBER 18**
Last day to withdraw from 11 week fall classes*
- NOVEMBER 24, 25**
Thanksgiving Holiday (college closed)
- DECEMBER 9**
Fall term ends
- DECEMBER 14**
Fall term grades available online

*Drop and withdrawal dates vary for classes fewer than 8 weeks in length. See page 4 for details.

WHAT'S INSIDE?

- 3** Tuition & Fees | Discounts & Waivers
- 4** Payments | Drop & Refund policies | Financial Aid
- 5-11** Summer Community Education
- 12** How to Use This Schedule
- 13** Summer Pre-College
- 14-15** Summer Credit Classes
- 16** Foundation News
- 17** Fall Pre-College
- 18-21** Fall Credit Classes
- 23** Faculty Profile: Kalie Brunton

SUMMER/FALL REGISTRATION

Registration priority for non-veterans is based on the number of credits successfully completed at CGCC. It does not include courses attempted or graded F, W, I, AU, or NP, transfer credits, or classes currently in progress.

In compliance with House Bill 2565, CGCC offers priority registration to veterans, active or reserve service members, and dependents receiving VA education benefits, in advance of the official registration period each term.

Students may also register on any scheduled registration day or time **after** their priority day through the first week of the term. After the first week, students must obtain instructor permission to join a class in progress.

Date	Start Time	Credits completed prior to spring term 2022
May 2	8 am	Summer Community Education
May 16	8 am	Veterans and dependents of veterans
	9 am	100+
	11 am	80
May 17	2 pm	60
	8 am	40
	11 am	20
May 18	2 pm	1
	8 am	New Students

Current students: Log into the student portal cgcc.edu/mycgcc

New students: Fill out an admissions form cgcc.edu/admissions, then meet with an academic advisor and register for your first term.

Community Education students: Register at cgcc.coursestorm.com. Need assistance? Contact Student Services at (541) 506-6011, option 2.

COLLEGE PHONE NUMBERS

College main line	(541) 506-6000
Bookstore	(541) 506-6061
Business Office/Payments	(541) 506-6057
Child Care Partners	(541) 506-6131
Financial Aid	(541) 506-6021
Instructional Services	(541) 506-6031
Library	(541) 506-6081
Pre-College & GED®	(541) 506-6041
ESOL	(541) 506-6000, ext. 7121
Student Services (Admissions, Advising, Testing) Assistance	(541) 506-6011, option 2 711 Relay

Cover photo by Kalie Brunton

Art pg 22 "Chandos Revisited" 2016 digital painting by Jessica Griffin Conner. Used by permission, all rights reserved.

HOW MUCH DOES IT COST?

Credit Classes Tuition + Fees¹

Enrollment Level	# of Credits	Tuition	Fees	Total ²
Tuition Cap³				
	14	\$1,638	\$490	\$2,128
	13	\$1,521	\$455	\$1,976
Full time	12	\$1,404	\$420	\$1,824
Three quarter time	11	\$1,287	\$385	\$1,672
	10	\$1,170	\$350	\$1,520
	9	\$1,053	\$315	\$1,368
Half time	8	\$936	\$280	\$1,216
	7	\$819	\$245	\$1,064
	6	\$702	\$210	\$912
Less than half time	5	\$585	\$175	\$760
	4	\$468	\$140	\$608
	3	\$351	\$105	\$456
	2	\$234	\$70	\$304
	1	\$117	\$35	\$152

Fees and Additional Information

Service fee - \$30 per credit

Universal fee charged per-credit intended to replace fees such as technology and parking fees.

Activities fee - \$5 per credit

Universal fee charged per credit to cover activities and events.

Online/Hybrid fee - \$20

Online and hybrid classes are delivered through a system called Moodle, and a fee is charged per class to cover administrative costs of the technology.

Instructional fee/program fee/book fee - varies

Some courses include a fee that covers additional instructional costs or materials for that class. These may be charged on a per-course or per-credit basis, and are listed with the specific class to which they apply.

Lab fee - varies

Lab fees are charged for classes that have supplies and materials used by students each term for specific classes.

Community Education Tuition + Fees¹

Tuition and fees for community education classes are listed with each class.

Discounts & Waivers

Discounts for District Residents, age 65+

District residents of Hood River or Wasco Counties 65 years or older are eligible to receive a 50 percent tuition discount on both credit and community education classes on a seat available basis. Check the course description for discount eligibility. Discounts do not apply to full classes or to lab and other class fees. You will be notified if the class is full and the tuition discount will not apply. Request your discount at the time of payment or by calling the Business Office.

Oregon Senior Option—applies to credit classes only

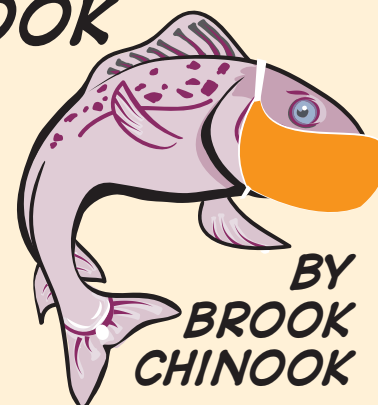
Senior Oregon residents are eligible for a program called Oregon Senior Option that allows them to audit credit classes that are not full while paying no tuition. Students pay associated fees and book costs. For more information, contact Student Services.

¹ | Tuition and fee rates are subject to change. In-state tuition applies to residents of Oregon, Washington, Idaho, and Nevada. All other states, out-of-state tuition of \$243 per credit applies.

² | Not including other fees or books

³ | At 15 credits or above, only additional fees are charged. The tuition stays at \$1,638!

BROOK'S NOOK



GREETINGS!

BROOK'S NOOK IS MOVING TO AN "ASK BROOK" MODEL! SEND YOUR QUESTIONS TO OUR EDITOR AT JCONNER@CGCC.EDU AND WE'LL ANSWER YOUR QUESTION IN FUTURE ISSUES.

FOR THIS EDITION, WE'VE ASKED OUR FINANCIAL AID EXPERT, SARA VIEMEISTER, TO ANSWER THE TOP 3 QUESTIONS FROM FINANCIAL AID STUDENTS, ALONG WITH SOME GREAT ANSWERS!

1. I FILLED OUT MY FAFSA AND THEY SAID I QUALIFY...WHERE'S MY MONEY?

---- HAVE YOU CHECKED YOUR MYCGCC STUDENT PORTAL? YOU MAY HAVE SOME DOCUMENTS TO SUBMIT. OTHERWISE, SCHEDULE AN APPOINTMENT WITH A FINANCIAL AID EMPLOYEE TO SEE IF THERE'S ANYTHING GOING ON THAT NEEDS TO BE FIXED.

2. WHERE ARE MY LOANS?

---- AT CGCC, STUDENTS MUST REQUEST LOANS. THEY ALSO MUST COMPLETE ENTRANCE COUNSELING AND A MASTER PROMISSORY NOTE VIA WWW.STUDENTAID.GOV.

3. I SUBMITTED A FAFSA A COUPLE OF YEARS AGO...WHERE'S MY MONEY?

---- STUDENTS MUST FILL OUT A FAFSA EVERY YEAR. THE NEW FAFSA'S ARE AVAILABLE OCTOBER 1ST EACH YEAR.

HAVE ANY MORE FINANCIAL AID QUESTIONS? YOU CAN GET IN TOUCH BY EMAILING FINANCIALAID@CGCC.EDU!

WHEN AND WHERE DO I PAY?

Credit Class Payments

Payment for credit classes is due on the first Friday of the term, unless a payment arrangement has been made with the business office. Late fees will be assessed at a rate of 10% of account balance, up to \$75, if paid after the first week of the term.

Community Education Class Payments

Payment for community education/non-credit classes is due at the time of registration.

Cashier Locations

The Dalles Campus Business Office

Pay Online or by Phone

Payments can be made through the MyCGCC student account portal, or by calling the Business Office. Students/parents who need to make payment arrangements, request an installment plan, or ask a billing question can call the Business Office. **Student information cannot be given out over the phone without identity verification. Any person other than the student must also have a release of information on file.**

- Log in to MyCGCC at <https://www.cgcc.edu/MyCGCC>
- or call the Business Office (541) 506-6057

More information at

www.cgcc.edu/business-office

Financial Aid & Eligibility

www.cgcc.edu/financial-aid
Federal School Code (FAFSA) 041519

Students may access financial aid resources (grants, scholarships, work-study, and loans) and useful information about budgeting and paying for college in the following ways:

- Financial Aid Office
- www.cgcc.edu/financial-aid
- (541) 506-6021 or fax (877) 368-6370
- financialaid@cgcc.edu

Students should consult with CGCC:

- before adding or dropping a class
- before withdrawing from classes
- if failing a class, or as soon as possible after receiving a failing grade
- if receiving a non-CGCC scholarship or other external funding

Worried or not sure what to do? Contact a Financial Aid representative!

Drop Dates, Refunds & Removing Charges

Charges:

Charges are applied to a student's account when the student registers for a class. All of the tuition charges associated with a class will be removed if the student officially drops within the refund period. Some lab fees are non-refundable. No charges will be removed if the student drops after the drop deadline.

Drop Deadlines for Credit Classes:

Credit classes must be dropped online through MyCGCC. If a credit class is not dropped within the drop period, it will result in a "W" grade on the transcript, indicating a withdrawal, and no charges will be reversed.

Students are entitled to a 100% refund, except for non-refundable lab fees, when a course is dropped during the following deadlines:

- 8-11 week classes | drop by the first Friday of the term
- 2-7 week classes | drop by the end of the first day of the class
- classes fewer than 2 weeks | drop before the first class
- No refunds will be given after the deadline, except in cases where a Tuition Appeal is approved (see "Refund Requests After the Drop Period" for details on eligibility)

Drop Deadlines for Non-Credit Classes:

Non-credit/community education classes may be dropped in person at Student Services, or over the phone with a Student Services representative. Students are entitled to a 100% refund, except for non-refundable lab fees, when a non-credit course is dropped prior to the first class meeting.

Refund Requests Within the Drop Period:

The Business Office automatically issues refunds to students who drop within the drop period. The refund process is as follows:

- Refunds from tuition and fees are first applied to outstanding charges on the student's account. If the student receives financial aid and opted to charge books on his/her account, this will also be deducted prior to any refund.
- If the credit is the result of a payment by check or cash, a check is issued in the student's name.
- If the credit is the result of a bank card payment, the refund will be applied to the original bank card.
- Refunds resulting from check overpayment are held two weeks from the date of the original payment.

Refund Requests After the Drop Period for Credit Classes:

If a student believes an extreme hardship prevented completion of a credit course, and the student could not drop during the refund period, the student may request to have tuition charges removed. Fees, specifically any non-refundable lab fees may not be refunded. A Tuition Appeal form for requesting a refund can be obtained online at <https://www.cgcc.edu/student-forms>. The student must provide documentation of the circumstances to support their claim. The petition, and all accompanying documentation, must be received by the filing deadline to be considered. Please see the form for more details.

Refund Requests After the Drop Period for Community Education Classes

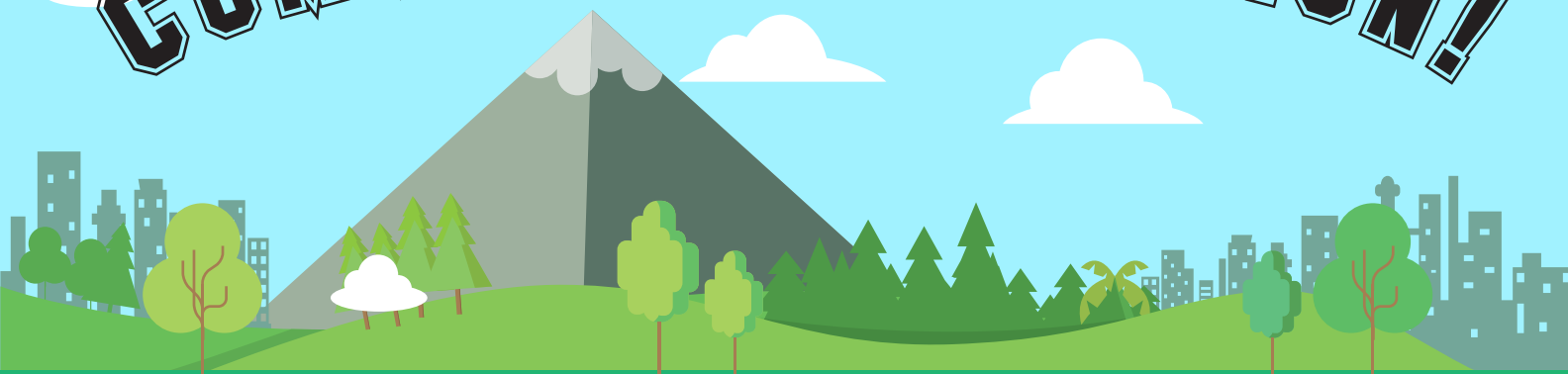
Requests for refund on community education classes will be evaluated on a case-by-case basis. Please contact the community education coordinator for help at (541) 506-6031 or jneptune@cgcc.edu

Equal Opportunity & Non-discrimination

Columbia Gorge Community College is an equal opportunity educator and employer. It is the policy of Columbia Gorge Community College and its Board of Education that there will be no discrimination or harassment on the grounds of race, color, sex, marital status, national origin, religion, age, disability, veteran status, sexual orientation, and any other status protected by applicable local, state, or federal law in any educational programs, activities, or employment. Persons having questions about equal opportunity and nondiscrimination should see <https://www.cgcc.edu/hr/accommodations-and-civil-rights> for more details and contact information of persons who can answer questions regarding equal opportunity and nondiscrimination.

A new way to register for

COMMUNITY EDUCATION!



REGISTER ONLINE AT
CGCC.COURSESTORM.COM

IF YOU NEED ASSISTANCE, CONTACT STUDENT SERVICES AT (541) 506-6011, OPTION 2

REGISTRATION OPENS MAY 2!

TAKE OUR COMMUNITY EDUCATION SURVEY!

EVERY ENTRY HAS A CHANCE TO WIN A \$100 VISA GIFT CARD.

GO TO

[HTTPS://TINYURL.COM/CGCC-COMM-ED-SURVEY](https://tinyurl.com/cgcc-comm-ed-survey)

OR SCAN THE QR CODE



CHILD CARE PARTNERS

Dividing Deeper into the Foundational Systems of Tactile, Vestibular and Proprioception

We will dive deeper into each system that lays the foundation for how we process and explore our environments. Learn activities to promote healthy integration of each item, as well as, understand and appreciate how each individual, including yourself, is unique in our own ways.

CED9050-01 7/26 Tuition: \$25
 Zoom 1 day Tu 6:00-9:00pm Chauthani

Examining Resilience and Stress in Early Childhood

Adverse childhood experiences are an extremely common occurrence in the lives of many children. This training will examine these experiences and demonstrate how to promote resilience and protective factors within your child care using that I have, I am, and I can theory. Providers will participate in discussions and feel confident in implementing these behaviors within their programs.

CED9050-02 6/28 Tuition: \$25
 Zoom 1 day Tu 6:00-9:00pm Wu

Holiday Safety for Child Care

Fall and Winter holidays pose special hazards for child care programs. Join us as we explore the diverse holidays celebrated in the United States. Plan how you will mitigate the dangers associated with holiday and seasonal activities to keep children and staff safe.

CED9050-03 8/25 Tuition: \$25
 Zoom 1 day Th 6:00-9:00pm Thomas

Introduction to Registered Family Child Care Part Two

STOP - Please note: There are two parts to the Introduction to Registered Family Child Care (IRF). You can register for Part 2 after you have completed the IRF Part One online class located at <https://occd.educadium.com/>. This must be completed first!

CED9050-04 7/13 Tuition: FREE
 Zoom 1 day W 6:00-9:00pm Massie/Ochoa

CED9050-05 9/13 Tuition: FREE
 Zoom 1 day Tu 9:00am-12:00pm Massie

Register at cgcc.coursestorm.com

HRC = Hood River Center | TDC = The Dalles Campus | Z = Zoom

For Zoom classes, students will receive instructions on how to log in prior to the first day of class.

M - Mon | Tu - Tues | W - Weds | Th - Thurs | F - Fri | Sat - Sat | Su - Sun
 lu - lunes | ma - martes | mi - miércoles | ju - jueves | vi - viernes
 sá- sábado | do - domingo

Introduction to SPARK

The Introduction to SPARK is designed to help you understand SPARK. Participants will gain the knowledge and tools needed to participate in SPARK. The training objectives are: understand the purpose of a QRIS and the SPARK partners, understand the supports and incentives for programs, understand the documents and process for participating in SPARK, awareness of the Quality Improvement Plan, understand the portfolio submission and review process, and identify next steps.

CE09050-06	7/27	Tuition: FREE		
Zoom	1 day	W	6:30-8:30pm	Massie/Parsons
CE09050-07	8/30	Tuition: FREE		
Zoom	1 day	Tu	6:30-8:30pm	Parsons

Play, The Work of Children

In this training we will explore the various theories of play and how it is the work of children. We will also examine what children are learning while they are playing and making sure we are providing appropriate experiences and materials. Lastly providers will explore strategies to promote development and learning in children of all ages.

CE09050-08	8/9	Tuition: \$25		
Zoom	1 day	Tu	6:00-9:00pm	Haworth

Potato, Potato: I Am Not Sure What I Said Is What You Heard

Have you ever wondered why your communication efforts work well with one individual and not another? Communication may appear simple but it is complex and knowing the various components of effective communication is the key to a respectful, trusting, supportive and collaborative relationship with your families in which you create a win-win situation for all. In this session, learn how to communicate more effectively with your families.

CE09050-09	7/19	Tuition: FREE		
Zoom	1 day	Tu	6:00-8:00pm	Parsons

Returning to Our Roots: Taking the Classroom Outdoors

Outdoor play is essential to whole child development. There has been a shift around the world toward nature-based early childhood education. Participants will explore the concept of nature-based ECE and examine curriculum and program effectiveness for kindergarten readiness.

CE09050-10	7/21	Tuition: \$25		
Zoom	1 day	Th	6:00-9:00pm	Hauptert

Trauma y Tipos de Trauma

Dentro de este entrenamiento, los participantes analizaran en profundidad el Trauma y los Tipos de Traumas. Proveedores exploraran el impacto que el trauma tiene en los individuos y las comunidades el las que viven y aprenden. Participantes continuaran aumentando su conocimiento sobre el tema de trauma y los tipos de traumas que ocurren en la vida cotidiana. (Within this training, participants will take an in-depth look into Trauma and Types of Trauma. Providers will explore the impact trauma has on individuals and the communities in which they live and learn. Participants will continue to increase their knowledge surrounding the topic of trauma and the types of trauma occurring in everyday life.)

CE09050-11	9/8	Costo: \$25		
Zoom	1 día	ju	6:00-9:00pm	Leon

Using TS Gold in Your Program

I have to use TS Gold for assessment, now what? Let's discuss the cycle of observation and assessment. Learn how to make TS Gold work for your program. Together we will explore tips and strategies that help manage observations and help gain a better understanding of the ongoing documentation process

CE09050-12	8/10	Tuition: \$25		
Zoom	1 day	W	6:00-9:00pm	Emmrich

Words We Use: Positive Phrasing to Support Young Children

Learn ways to speak with children that promote a peaceful, respectful classroom environment. Explore phrases that you may use currently that you want to eliminate. Transform your tone and increase the kindness in your voice when you speak to children. Practice building phrases that are honest and clear, loving and kind.

CE09050-13	7/12	Tuition: \$25		
Zoom	1 day	Tu	6:00-9:00pm	Williams

GENERAL INTEREST**Archery**

Learn the basics of shooting the bow and arrow, utilizing some of the techniques and methods that have been adopted by the Celilo Bowman Archery Club. This course is for people 12 years of age or older with the desire to shoot a bow and arrow, but have little or no experience. Learn archery shooting fundamentals while gaining knowledge about equipment options and choices. Note: all equipment will be provided by the Celilo Bowmen Archery Club, but you may bring your own. Closed toe shoes or boots required. 12-year-olds must have parent or guardian present. 13-17 must have parent or guardian sign waiver at start of first class, 18+ must fill out waiver at time of first class. Please arrive 15 minutes prior to first class to fill out paperwork. No discounts or waivers.

CE0400-01	7/12-7/14	Tuition: \$85		
CBAR*	1 wk	Tu W Th	9:00am-12:00pm	Staff
CE0400-02	7/30-7/31	Tuition: \$85		
CBAR*	1 wk	Sat Sun	9:00am-1:00pm	Staff
CE0400-03	8/9-8/11	Tuition: \$85		
CBAR*	1 wk	Tu W Th	9:00am-12:00pm	Staff
CE0400-04	9/24-9/25	Tuition: \$85		
CBAR*	1 wk	Sat Sun	9:00am-1:00pm	Staff

*Celilo Bowmen Archery Club, 5375-5393 Hawley Steele Rd, The Dalles, OR

Beginning Guide to Crystals

This is a perfect class for those who are interested in adding crystals into their spiritual practice or life. Taught by Amanda Polehn from Starseed Curiosities and Gifts this class is fit for a beginner and includes a crystal starter kit of amethyst, selenite, clear quartz, smoky quartz, rose quartz, and a sage bundle. Come learn about the metaphysical properties as well as how to care for your stones and incorporate them into your daily routine. Leave with all the information you need to feel confident about beginning with crystals. No discounts or waivers.

CE0400-05	7/14	Tuition: \$100		
TDC 3.203	1 day	Th	6:00-8:00pm	Polehn
CE0400-06	8/11	Tuition: \$100		
TDC 3.203	1 day	Th	6:00-8:00pm	Polehn

Homebuyer's Workshop

This class is designed to help first-time homebuyers learn the basics about the home buying process. Learn the lingo and leave better prepared to successfully complete the home buying process. Course covers: housing decisions, financial preparation, shopping for a home, mortgages, avoiding fraud in lending, closing, and maintaining your investment. Lunch is provided and scholarships available. For information about available scholarships, contact Columbia Cascade Housing Corp. at (541) 296-3397. Tuition covers up to two participants. Please provide registration information for both. No college discounts or waivers.

CE0805-01	7/13 & 7/14	Tuition: \$30		
Zoom	1 wk	W Th	5:30-8:30pm	Heredia

NRA Basic Pistol Safety Course

The NRA Basics of Pistol Shooting Course is for beginning and intermediate students to learn the basics of pistol safety and handling from local qualified instructors. Classroom is located in the basement of the Mid Columbia Senior Center. All shooting for the class is conducted at the Indoor Range of The Dalles Rifle & Pistol Club. Students will be required to certify to their legal eligibility and sign a Firearm Release Form. Must attend all four sessions to complete the course. Emergency situations considered. Successful participants will receive a certificate of completion, which is required to apply for an Oregon Concealed Handgun License. Students will be required to wear a mask to class. No discounts or waivers.

CED0400-07 7/12-7/21 Tuition: \$110
 MCSC* 2 wks Tu Th 6:00-9:00pm Staff

*Mid Columbia Senior Center, 1112 W 9th St, The Dalles, OR.

Pottery

Take your pottery skills to a new level by taking this class! It's a chance to spread your wings and create what you want. This class is for beginning and advanced potters and covers levels of hand-building and wheel-throwing technique working with cone 6, mid-range clay and glazes with instruction in both. The first bag of Clay is included. No discounts or waivers.

CED0400-08 6/28-8/30 Tuition: \$180
 TDC 4.130 10 wks Tu 6:00-8:00pm Bolton

Pottery - Studio

Studio time to take your pottery skills to a new level! It's a chance to spread your wings and create what you want. This class is for beginning and advanced potters and covers levels of hand-building and wheel-throwing technique working with cone 6, mid-range clay and glazes with instruction in both. Clay is not included, but can be purchased from the CGCC Bookstore. Must be registered for Pottery as well. No discounts or waivers.

CED0400-09 6/30-9/1 Tuition: \$90
 TDC 4.130 10 wks Th 6:00-8:00pm Bolton

Property Manager Pre-License Course

Get prepared to take the State of Oregon Property Manager License Exam. This course is the fastest way to qualify to take the exam which covers the role of property managers, tenant relations, fair housing, lease agreements and more. You must attend all evening class sessions through Zoom, and have online capacity to complete the self-study portion of this course. Taught by an experienced Property Manager. For information call (503) 551-4467 or email stacey@sts.careers. All materials provided. No discounts or waivers.

CED0805-02 7/12-8/23 Tuition: \$699
 Zoom 7 wks Tu 6:00-8:00pm Jaure

Real Estate Broker Pre-License Course

This accelerated Real Estate Broker Certification Preparation course prepares you to qualify for the Oregon Real Estate Broker's License Exam in just 11 weeks. The course is delivered using Zoom online video conferencing, and combines three hours of classroom time each week with additional online self-study that meets all of the Oregon Real Estate Agency pre-license criteria. The class is taught by Janda Fleming, a principal broker trainer who has been helping students pass the state exam since 2006. Students must provide a personal email address at registration to be contacted with class access instructions. For more information, contact Stacey at stacey@sts.careers. No discounts or waivers.

CED0805-03 7/7-9/8 Tuition: \$629
 Zoom 11 wks Th 5:30-8:30pm and
 9/10 Sat 9:00am-5:00pm Fleming

Rhythm Tap, Beginning

Rhythm Tap is a style that incorporates tap rudiments with various syncopated rhythms. Students learn steps transforming their feet into instruments of percussion. Learning easy fun tap dances, choreographed by the instructor. No experience necessary. No discounts or waivers.

CED0400-10 6/29-8/31 Tuition: \$65
 TDC 1.163 10 wks W 5:15-6:30pm Martin

HEALTHCARE-RELATED

BLS for Healthcare Providers CPR Course

Covers the knowledge and skills for Basic Life Support (BLS) for healthcare providers, initial and renewal certification. Prepares a wide variety of healthcare professionals to recognize sudden cardiac arrest, respiratory emergencies, provide CPR, use an AED and relieve choking in both children and adults. Successful completion of this course provides certification and an AHA BLS Provider Card. The American Heart Association (AHA) requires all students to have a current copy of the course textbook to have it available for personal use. This book will be provided to you in class.

NHO9420-01	7/9	Tuition: \$90	
TDC 1.454	1 day	Sat	1:00-6:00pm Adams
NHO9420-02	7/30	Tuition: \$90	
TDC 1.454	1 day	Sat	1:00-6:00pm Adams
NHO9420-03	8/6	Tuition: \$90	
HRC 102	1 day	Sat	9:00am-1:00pm Butler
NHO9420-04	9/10	Tuition: \$90	
HRC 102	1 day	Sat	9:00am-1:00pm Butler

First Aid CPR & AED

The Heartsaver First Aid Course teaches rescuers to effectively recognize and treat adult emergencies in the critical first minutes until emergency medical service personnel arrive. The course also provides a complete health and safety training solution for first aid, adult/infant CPR, and Automated External Defibrillation (AED). Course meets the State of Oregon daycare licensing requirement. American Heart Association (AHA) requires all students to have a copy of the course textbook to prepare for the course and to have it available for personal use. The book will be provided to you in class.

CED9067-01	7/23	Tuition: \$80	
HRC 102	1 day	Sat	8:30am-1:00pm Webster
CED9067-02	8/13	Tuition: \$80	
TDC 1.454	1 day	Sat	8:30am-1:00pm Webster
CED9067-03	9/24	Tuition: \$80	
TDC 1.454	1 day	Sat	1:00-6:00pm Webster

*The American Heart Association (AHA) strongly promotes knowledge and proficiency in Basic Life Support (BLS), and has developed instructional materials for this purpose. Use of these materials in an educational course does not represent course sponsorship by the AHA, and any fees charged for such a course do not represent income to the Association.



Adult Recreation

If you are interested in adult sports and recreation visit Hood River Valley Parks + Recreation District.

Visit them at:
hoodriverparksandrec.org
 or call (541) 386-2055

American Heart Association Instructor Recertification - BLS

Completion of this course will renew certification as a BLS Instructor through the American Heart Association (AHA). Lab fee includes renewal of CGCC TC affiliation fee. This course is completed in classroom sessions with other instructors to discuss teaching methodology, current science and changes, paperwork and demonstrate your ability to perform CPR and use the AED correctly and effectively. Each instructor will be monitored in the second half of the class teaching part of an actual CPR class. The American Heart Association BLS Instructor is authorized to teach both the Heartsaver community level provider classes and the BLS for Healthcare Providers CPR courses. Prior to enrolling in the BLS Instructor course, you must have the following:

- A current AHA BLS for Healthcare Provider CPR card
- IF you intend to teach Heartsaver in addition to BLS- Also have a current AHA Heartsaver First Aid CPR card
- A current AHA BLS Instructor card
- Have completed any required AHA updates or training in the current certification cycle.

CED0571-01	7/9	Tuition: \$155		
TDC 1.454	1 day	Sat	10:00am-6:00pm	Adams
CED0571-02	7/30	Tuition: \$155		
TDC 1.454	1 day	Sat	10:00am-6:00pm	Adams

American Heart Association Instructor Recertification - Heartsaver

Completion of this course will renew certification as a Heartsaver Instructor through the American Heart Association (AHA). Lab fee includes renewal of CGCC TC affiliation fee. This course is completed in classroom sessions with other instructors to discuss teaching methodology. Current science and changes, paperwork and demonstrate your ability to perform CPR and use the AED correctly and effectively. Each instructor will be monitored in the second half of the class teaching part of an actual CPR class. Prior to enrolling in the BLS Instructor course, you must have the following:

- A current AHA Heartsaver First Aid CPR card
- A current AHA Heartsaver Instructor card
- Have completed any required AHA updates or training in the current certification cycle.

CED0571-04	9/24	Tuition: \$155		
TDC 1.454	1 day	Sat	10:00am-6:00pm	Webster

AHA New Instructor Program - BLS

Completion of this course will grant initial certification as a BLS Instructor through the American Heart Association (AHA). Lab fee includes CGCC TC affiliation fee. This course is completed in classroom sessions with other instructor candidates to become familiar with the AHA course options, materials, equipment, outlines, and teaching methodology. You will also go over current science and changes, paperwork, demonstrate your ability to perform CPR and use the AED correctly and effectively. Each instructor will be monitored in the second half of the class teaching part of an actual CPR class. The American Heart Association BLS Instructor is authorized to teach both the Heartsaver community level provider classes and the BLS for Healthcare Providers CPR courses. Prior to enrolling in the BLS Instructor course, you must have the following:

- A current AHA BLS for Healthcare Provider CPR card
- If you intend to teach Heartsaver in addition to BLS- Also have a current AHA Heartsaver First Aid CPR card
- Completion of the steps listed in the orange box on this page

CED0571-03	7/9	Tuition: \$190		
TDC 1.454	1 day	Sun	8:00am-6:00pm	Adams

AHA New Instructor Program - Heartsaver

Completion of this course will grant initial certification as a Heartsaver Instructor through the American Heart Association (AHA). Lab fee includes CGCC TC affiliation fee. This course is completed in classroom sessions with other instructor candidates to become familiar with the AHA course options, materials, equipment, outlines, and teaching methodology. You will also go over current science and changes, paperwork, demonstrate your ability to perform CPR and use the AED correctly and effectively.

Each instructor will be monitored in the second half of the class teaching part of an actual CPR class. The American Heart Association Heartsaver Instructor is authorized to teach the Heartsaver community level provider classes. Prior to enrolling in the Heartsaver Instructor course, you must have the following:

- A current AHA Heartsaver First Aid CPR card
- Completion of the steps listed in the orange box on this page

CED0571-05	9/24	Tuition: \$190		
TDC 1.454	1 day	Sat	8:00am-6:00pm	Webster

Certified Nursing Assistant 2 - Core Curriculum

Covers the knowledge and skills needed for the Certified Nursing Assistant 2 to provide safe physical care of patients in the acute care setting. Follows curriculum approved by the Oregon State Board of Nursing in the areas of Interpersonal Skills/Communication, Observation and Reporting, Technical Skills, Infection Control, Safety, and Caregiver Self-Care. Prerequisite/ Concurrent: current Oregon CNA 1 license, current TB test, pass a criminal background check and drug screen.

NH09410-01	See dates below	Tuition: \$900		
TDC 1.454 & TDC 1.440	7 wks	Tu W		Naas
Lecture:	6/28-7/20	8:30am - 5:00pm		
Clinical:	7/26-8/10	7:00am- 3:30pm		

*The American Heart Association (AHA) strongly promotes knowledge and proficiency in Basic Life Support (BLS), and has developed instructional materials for this purpose. Use of these materials in an educational course does not represent course sponsorship by the AHA, and any fees charged for such a course do not represent income to the Association.

All new AHA Instructors must complete the following steps prior to class:

STEP 1: SEND AN EMAIL TO THE CGCC INSTRUCTOR:

Email your contact information to americanheartassociation@cgcc.edu. You will be sent specific information on additional steps in preparation for the IN-CLASS Discipline Specific Training portion of the course approximately 1 week prior to the course date.

STEP 2: COMPLETE THE AHA INSTRUCTOR ESSENTIALS COURSE ONLINE

Go to: Course Catalog at elearning.heart.org. Click "Courses" then "Instructor Training." Select BLS Instructor Essentials Online (purchase cost is \$35). Complete the Instructor Essential course. Print the certificate of completion and bring it with you to class.

If you plan on also teaching Heartsaver courses complete the above instructions for the Heartsaver Instructor Essentials course. (This second part of step one only needs to be completed by instructors who plan on teaching both the Healthcare provider BLS and the public Heartsaver CPR First aid class.)

STEP 3: ACQUIRE COURSE TEACHING MATERIALS:

Instructor candidates need to purchase or have access to the BLS Instructor Manual (and Heartsaver Instructor Manual if applicable) as well as the DVD or online videos for each class the candidate intends to instruct.

The manual(s) must be brought to class.

STEP 4: DISCIPLINE SPECIFIC TRAINING

This course is completed in classroom sessions with other instructor candidates to become familiar with the AHA course options, AHA Instructor Network, materials, equipment, outlines, and teaching methodology. You will also go over current science and changes, paperwork, demonstrate your ability to perform CPR and use the AED correctly and effectively.

STEP 5: MONITORING & MENTORING

Each instructor will be monitored in the second half of the class teaching part of an actual CPR class

STEP 6: TRAINING CENTER AFFILIATION

To complete the Instructor Training program, you must affiliate with CGCC's Training Center online with the AHA Instructor Network. This process will be covered in class.

SMALL BUSINESS DEVELOPMENT CENTER

How to register: Register for SBDC classes online at <https://tinyurl.com/SBDC-CGCC>. Contact the SBDC at (541) 506-6121 for assistance or if you have questions.

The SBDC is funded in part through a cooperative agreement with the U.S. Small Business Administration, and with lottery funds awarded by the Oregon Business Development Department. The Small Business Development Center (SBDC) is an important part of CGCC. Its goal is to provide business and technical assistance to new and existing business owners and managers in the Mid-Columbia area.

- Free one-on-one business counseling
- Seminars and workshops
- These programs and services are extended to the public on a nondiscriminatory basis.



Comenzando tu negocio

Tienes una idea de negocio y no sabes por donde comenzar? Hablaremos de como iniciar un negocio, requisitos, registraciones y puntos de contacto.

SBD9129-01	7/12	Costo: gratis		
Zoom	1 day	ma	2:00-4:00pm	Mendoza
SBD9129-02	8/2	Costo: gratis		
Zoom	1 day	ma	2:00-4:00pm	Mendoza
SBD9129-03	9/7	Costo: gratis		
Zoom	1 day	mi	2:00-4:00pm	Mendoza

Creating a Successful Beverage Program

Creating a great beverage program is more than just ordering inventory and printing a list. What will make your program add value to the bottom line? What will make guests choose you over another business? These are things we will cover as we learn to plan, implement, and develop an alcohol beverage program.

SBD9952-01	8/25	Tuition: \$25		
Zoom	1 day	Th	2:00-3:30pm	Ash

Digital Marketing

Learn to promote your business using the various social media platforms, create internet ads and buy ad space on social media sites, and manage your company on Google

SBD9912-01	8/9	Tuition: \$25		
Zoom	1 day	Tu	2:00-4:00pm	Dean

Entendiendo estados financieros

En esta clase hablaremos de los estados financieros de tu negocio, como leerlos, como utilizarlos para la planeación de tu negocio y para comparar tu negocio con la industria en la que te encuentras.

SBD9952-02	7/19	Costo: gratis		
Zoom	1 day	ma	6:00pm-8:00pm	Mendoza

Excel Level 1: The Basics of Excel

Gain a solid understanding of the Basics of Microsoft Excel. Learn how to navigate the Ribbon; enter and edit data; the basics of formulas and the most common functions used in the Office. Dramatically increase your efficiency and effectiveness with dozens of shortcuts, tips and tricks.

SBD9952-03	7/5	Tuition: \$25		
Zoom	1 day	Tu	2:00-4:00pm	Dean

Excel Level 2: Tips and Tricks for Intermediate Excel

Go even further with Microsoft Excel. Get insights into new and advanced functions, show off your data with charts and graphs, and learn how to integrate Excel with other programs.

SBD9952-04	7/19	Tuition: \$25		
Zoom	1 day	Tu	2:00-4:00pm	Dean

Intro to Cider

How is cider defined, produced, and enjoyed? We will learn the past and present of this ancient beverage and its home in the Pacific Northwest. No discounts or waivers.

CEDO400-11	7/11	Tuition: \$25		
Foley/Wyn*	1 day	M	3:00-5:00pm	Ash

*The Foley/Wyn House 106 E 4th St The Dalles, OR 97058

Intro to Craft Brewing

This course will provide a general overview of the brewing process with a focus on the core beer types that define the craft brewing industry. At the end of this course, students will be able to define major beer styles, describe the key steps of the brewing process, and describe the role that each of the four primary brewing ingredients play in determining beer quality. No discounts or waivers.

CEDO400-12	7/18	Tuition: \$25		
TBD	1 day	M	5:30-7:30pm	Ash

Quickbooks Online Level 1

For QuickBooks beginners. Learn how to use the most popular business accounting software program used by small businesses. If you have never used QuickBooks or are just starting to use the program, this training is for you! Class includes setting up company files, creating a chart of accounts, adding customers, jobs, and vendors. Also covers paying for expenses, invoicing, and receiving payments.

SBD9931-01	7/12	Tuition: \$75		
Zoom	1 day	Tu	2:00-4:00pm	Dean

Quickbooks Online Level 2

For intermediate QuickBooks Online Users. If you have completed QB Level 1 or are slightly more than a "new user" of QuickBooks, this training will help expand your existing base of knowledge. Class includes lessons in fundamentals of accounting, reconciling bank accounts, inventory, and running reports.

SBD9931-02	7/26	Tuition: \$75		
Zoom	1 day	Tu	2:00-4:00pm	Dean

Starting a New Business

Are you considering starting a business and don't know where to start? This course will teach you about business registration, business structure, licensing and basic information needed to get your business started.

SBD9129-04	6/28	Tuition: \$25		
Zoom	1 day	Tu	2:00-4:00pm	Staff

Training Staff to Sell Wine, Beer, and Cider

Learn how to train and coach your service staff to sell wine, beer, and cider effectively. No one has to be an expert to sell expertly. You will learn proper training & coaching techniques designed for the beverage industry & how to integrate them into your business.

SBD9952-05	8/16	Tuition: \$25		
Zoom	1 day	Tu	1:00-2:30pm	Ash

Writing an Effective Business Plan

A well thought out Business Plan is the cornerstone of any business. Learn the essential elements needed to plan for or to continue a successful business. In addition, the comprehensive elements of a SWOT analysis will be studied.

SBD9132-01	8/2	Tuition: \$25		
Zoom	1 day	Tu	2:00-4:00pm	Staff



LEARN SKILLS FAST!

You're contemplating a new career and with that, a career training program...
But what kind of assistance will you receive once you complete it?

Your Virtual Career Center offers support and guidance in taking the next step after completing your Career Training Program. It allows you to access industry market data, current job opportunities, and so much more. Learn more at <https://careertraining.ed2go.com/cgccoregon/virtual-career-center>

CGCC has partnered with Ed2Go to bring you:

- Online instruction
- Expert instructors
- Hundreds of courses to choose from
- 24-hour access

Enroll Now!

www.ed2go.com/cgccoregon

For more information, call (541) 506-6031

Here are some options (many more available!)

Beginner's Guide to Getting Published

Do you know the five most common reasons why manuscripts are instantly rejected? If your goal is to become a published freelance writer of fiction or nonfiction for books or magazines, this comprehensive course will help you guide your work directly into the hands of an editor and onto the shelves of your favorite stores. Your success in the writing game will be determined by the amount of credibility publishers attach to you and your work. This course will teach you how to give yourself the kind of credibility you need to succeed. This course will provide you with instant access to critical information most other writers don't discover for years and will walk you through every step of the publishing process. If you really want to be a writer, this course will give you all the tools you need to get published.

Instructor-led course: 6 weeks | Self-paced course: 3 months

Tuition: \$115

Register: <https://tinyurl.com/CGCC-ED2GO-GetPublished>

Beginning Conversational French

Prepare for your next trip to France by mastering the basics of conversational French. This course will provide you with proper pronunciation of French words that you'll use in your travels as well as cultural tips including appropriate gestures and body language.

Instructor-led course: 6 weeks | Self-paced course: 3 months

Tuition: \$100

Register: <https://tinyurl.com/CGCC-ED2GO-French>

Discover Sign Language

Gain confidence in your ability to sign with the Deaf community. This course immerses you in silence to help you gain an understanding of the perspective of the hearing impaired and uses videos to demonstrate not only how to make signs, but how to communicate with facial expression.

Instructor-led course: 6 weeks | Self-paced course: 3 months

Tuition: \$115

Register: <https://tinyurl.com/CGCC-ED2GO-SignLanguage>

How to Get Started in Game Development

Prepare to start developing your own games. This course provides the fundamentals of game development, tools and techniques for better game design decisions, and ways to position your games for success.

Instructor-led course: 6 weeks | Self-paced course: 3 months

Tuition: \$115

Register: <https://tinyurl.com/CGCC-ED2GO-GameDev>

Introduction to Photoshop CC

Whether you are a photographer, digital illustrator, graphic designer, or someone who wants to alter old family photos, you need to learn Adobe Photoshop. The Introduction to Photoshop Creative Cloud course is filled with easy-to-follow, detailed step-by-step instructions that teach you how to edit and manipulate images and create basic compositions using Photoshop in the Creative Cloud. Discover how to improve photographs by editing out flaws, correcting poor exposure, or creating a composite image using the newest techniques Photoshop has to offer. You will even learn how much fun you can have digitally painting and exploring filters and effects to create unique images. And, best of all, you need no prior artistic ability or Photoshop experience to take this course.

Instructor-led course: 6 weeks | Self-paced course: 3 months

Tuition: \$115

Register: <https://tinyurl.com/CGCC-ED2GO-PhotoshopCC>

Leadership

Gain the respect and admiration of others by developing your leadership skills. Even if you're not working in a leadership role, this course will teach you how to use the principles of great leaders to achieve success in your professional and personal life.

Instructor-led course: 6 weeks | Self-paced course: 3 months

Tuition: \$115

Register: <https://tinyurl.com/CGCC-ED2GO-Leadership>

Learn to Buy and Sell on eBay

Learn from an auction pro how to work from home or earn extra income by buying and selling goods online for top dollar. This course will teach you how to get noticed, value items, sell quickly, protect against fraud, and safely conduct financial transactions.

Instructor-led course: 6 weeks | Self-paced course: 3 months

Tuition: \$100

Register: <https://tinyurl.com/CGCC-ED2GO-eBay>

Speed Spanish

Imagine yourself speaking, reading and writing Spanish. Now you can with Speed Spanish. This course is designed for anyone who wants to learn Spanish pronto. You will learn six easy recipes for gluing Spanish words together to form sentences. In no time at all, you will be able to go into any Spanish speaking situation and converse in Spanish. ¡Qué Bueno!

Instructor-led course: 6 weeks | Self-paced course: 3 months

Tuition: \$115

Register: <https://tinyurl.com/CGCC-ED2GO-SpeedSpanish>

VESi ONLINE CONTINUING EDUCATION FOR K-12 EDUCATORS

Need CEUs for state relicensing? Look no further!

VESi ONLINE CONTINUING EDUCATION FOR K-12 EDUCATORS

CGCC, in partnership with Virtual Education Software (VESi), offers Continuing Education Units (CEUs) for online courses for educators that are convenient, flexible, and teach relevant and applicable content. VESi recommends that you check with your school district and/or state licensing agency to verify these course offerings will meet your district and/or state requirements for salary advancement and/or state certificate re-licensure. VESi courses are now tablet compatible, making it easy for you to recertify anytime, anywhere with reliable, stable online access. A few VESi courses are highlighted below, but a full list of descriptions for all courses is available at virtualeduc.com/cgcc

3 CEU courses Cost \$250 each

CEU8546-01	Advanced Classroom Management: Children as Change Agents
CEU8547-01	Attention Deficit/Hyperactivity Disorder: Information & Interventions for Effective Teaching
CEU8548-01	Autism & Asperger's Disorder: Information & Effective Intervention Strategies
CEU8563-01	Build School Communities: Brain Smart Classroom Management
CEU8549-01	Child Abuse: Working with Abused & Neglected Children
CEU8550-01	Drugs & Alcohol in Schools: Understanding Substance Use & Abuse
CEU8551-01	Educational Assessment: Assessing Student Learning in the Classroom
CEU8552-01	Harassment, Bullying & Cyber Intimidation in Schools
CEU8553-01	Inclusion: Working with Students with Special Needs in General Education Classrooms
CEU8554-01	Reading & Writing in Content Area
CEU8555-01	Reading Fundamentals #1: An Introduction to Scientifically-based Research
CEU8556-01	Reading Fundamentals #2: Laying the Foundation for Effective Reading Instruction
CEU8557-01	Six Traits of Writing Model: Teaching & Assessing
CEU8558-01	Talented & Gifted: Working with High Achievers
CEU8559-01	Teaching Diversity: Influences & Issues in the Classroom
CEU8560-01	Teaching Elementary Math Conceptually: A New Paradigm
CEU8561-01	Traumatized Child: The Effects of Stress, Trauma & Violence on Student Learning
CEU8562-01	Violence in Schools: Identification, Prevention & Intervention Strategies

4.5 CEU courses Cost \$295 each

CEU8537-01	Behavior is Language: Strategies for Managing Disruptive Behavior
CEU8564-01	English Language Learner: Language Acquisition
CEU8565-01	English Language Learner: Methods & Materials
CEU8538-01	Learning Disabilities: Practical Information for the Classroom Teacher
CEU8539-01	Reading Fundamentals #3: The Elements of Effective Reading Instruction & Assessment
CEU8540-01	Response to Intervention: Practical Information for the Classroom Teacher
CEU8541-01	Teaching Secondary Math Conceptually: Meeting Mathematics Standards
CEU8542-01	Try DI!: Planning & Preparing a Differentiated Instruction Program
CEU8543-01	Understanding Aggression: Coping in the Classroom
CEU8544-01	Understanding & Implementing Common Core Standards
CEU8545-01	Why DI?: An Introduction to Differentiated Instruction

Register at CGCC.CourseStorm.com

Need assistance? Contact Student Services at (541) 506-6011, option 2

HOW TO USE THIS SCHEDULE

Course descriptions for credit classes can be found online in our annual Catalog at www.cgcc.edu/catalog. New students *MUST* meet with an academic advisor to be cleared to register *BEFORE* registering for credit classes. Contact Student Services to schedule an appointment, (541) 506-6011, option 2.

Column topser: shows how to read course listing

Course #	Title			# of credits
Codes	Location	Days	Time	Instructor
Additional fees other information				

Course

Course descriptions in the catalog (www.cgcc.edu/catalog) are listed by the course number.

Title

The course title or name.

Credits

The number of credits for the class. CGCC uses a quarter system.

Locations

TDC

The Dalles Campus
400 East Scenic Drive
The Dalles, OR 97058

HRC

Hood River Center
1730 College Way
Hood River, OR 97031

Off campus

Courses held off-campus will include course location address or contact information

Days/dias

M	Monday/lunes	lu
Tu	Tuesday/martes	ma
W	Wednesday/ miércoles	mi
Th	Thursday/jueves	ju
F	Friday/viernes	vi
Sat	Saturday/ sábado	sá
Su	Sunday/domingo	do

Time

The start and end times for a class.

Instructor

The instructor's last name (surname).

Room numbers

TDC-The Dalles Campus

The first part of the number indicates the building number, the first number after the dot indicates which floor, and the whole number is the room number, which is listed on a placard at each room. For example, 3.103 means Building 3, 1st floor, room number 3.103.

Buildings 1-3 are clustered around the central courtyard (location of the amphitheater).

Building 4 is the arts building, lower parking lot.

Building 5 is the Regional Skills Center, located between the lower and upper parking lots.

Building 10/Readiness Ctr. is the Ft. Dalles Readiness and Workforce Innovations Center.

Building 11 is located between the Readiness Center and Building 3.

HRC-Hood River Center

Rooms at HRC are only 3 digits, because there is only one building at the Hood River Center. The first number indicates which floor, so room 301 is on the third floor.

Codes Key

O Online class
HYB Hybrid class
Z Zoom remote delivery

LAB Required lab section
GO Gorge Open OER
LG Low-GO OER

Codes

O

Class is offered entirely online. \$20 fee for online content is required. Students must log in by the first day of the term and show activity by the first Wednesday, or they may be dropped by the instructor as a no-show.

HYB

Class is offered through a mixture of online, zoom, and/or face-to-face class sessions. \$20 fee for online content is required. Students must log in by the first day of the term and show activity by the first Wednesday, or they may be dropped by the instructor as a no-show.

LAB

Class includes a required lab section and fee. Lab sections may have a different time, day, and location from the lecture portion of the class.

GO

Gorge Open OER classes use alternative textbooks and free resources instead of traditional textbooks. Instructors either develop original materials or access freely available ones, helping decrease the burden of textbook costs for students.

LG

Low-Go OER classes use low-cost textbooks under \$50. Instructors use low-cost resources and freely available ones, helping decrease the burden of textbook costs for students.

Z

Zoom is an app that allows users to hold classes or meetings collaboratively via the Internet from their own computer, phone, or tablet. There is no fee, but signup with an email address is required. CGCC students should use their CGCC school email to sign up.

COLLEGE-PREP | GED® | ESOL

COLLEGE-PREP COURSES

College-prep classes help students prepare for or improve scores on college placement tests, develop reading comprehension skills and strategies, renew or increase math skills, and develop writing composition and grammar skills. Students must be 16 years old or older **and** pursuing a GED®, or be 16 years old or older, have a high school diploma or GED® **and** be entering college. Students are required to attend a free Pre-College Success Orientation prior to attending classes. Please call (541) 506-6041 to sign-up.

Class dates: 6/27-8/18 | Tuition: \$25

Zoom Classes

ABE60-01	Pre-College Language Arts I: Science/Social Studies
Z	Zoom M W 5:30-7:50pm Carmicheal
ABE80-01	Pre-College Math I
Z	Zoom Tu Th 5:30-7:50pm Carmicheal

ENGLISH FOR SPEAKERS OF OTHER LANGUAGES (CLASES DE INGLÉS)

The English for Speakers of Other Languages (ESOL) program offers classes for persons whose native language is not English. The program focuses on reading, writing, listening and speaking. For more information, call (541) 380-0947.

Class dates: 6/27-8/18

Zoom Classes - Evening Tuition: \$25

ESOL10-01	ESOL - Level 1-2, Pre/Beginning Literacy
Z	Zoom M W 6:00-7:50pm Brown
ESOL30-01	ESOL - Level 3, High Beginning
Z	Zoom M W 6:00-7:50pm Brown
ESOL40-01	ESOL - Level 4, Low Intermediate
Z	Zoom Tu Th 6:00-7:50pm Brown
ESOL50-01	ESOL - Level 5, High Intermediate/Advanced
Z	Zoom Tu Th 6:00-7:50pm Brown

Hood River Classes (face-to-face) Tuition: \$25

ESOL10-02	ESOL - Level 1-2, Pre/Beginning Literacy
	HRC 203 Tu Th 6:00-7:50pm Ziegner
ESOL30-02	ESOL - Level 3 High Beginning
	HRC 203 Tu Th 6:00-7:50pm Ziegner

GED® PREPARATION

CGCC offers classes to develop the skills necessary to pass the GED® tests and prepare students to enter college and/or the workforce. Students must be 16 years old or older and pursuing a GED®, or be 16 years old or older, have a high school diploma or GED® and be entering college. Students are required to attend a free Pre-College Success Orientation prior to attending classes. Please call (541) 506-6041 to sign up.

Class dates: 6/27-8/18 | Tuition: \$25

Zoom Classes

GED60-01	Pre-College Language Arts I: Science/Social Studies
Z	Zoom M W 5:30-7:50pm Carmicheal
GED80-01	Pre-College Math I
Z	Zoom Tu Th 5:30-7:50pm Carmicheal

ON SNAP?

We have big news!

Introducing...

SNAP Training & Employment Program (STEP)

Students on SNAP can receive:

- 1-on-1 Coaching
- Connection to local resources
- Tuition & Fees Help
- Textbooks & Tools
- Transportation & Gas Cards
- & so much more!

Contact us today!

Cell/Text: (541) 300-7709
kraymond@cgcc.edu
ged.cgcc.edu/step



Need anything while going to school?

Reach out to our new campus **Resource Navigator!**

SHE CAN HELP WITH:

- School supplies
- Oregon Health Plan
- SNAP (or food stamps)
- Housing resources
- Food insecurity
- Childcare resources
- & so much more

If anything is preventing you from being successful in school, contact us today!

Tea Church-Witkowski
tchurch-witkowski@cgcc.edu
 (541) 288-3256
 Office: TDC 3.317



SUMMER CREDIT CLASSES

Course #	Title	# of credits
Codes	Location Days Time	Instructor
Additional fees other information		

ANTHROPOLOGY

ATH103-01	Introduction to Cultural Anthropology	4
O LG	Online	Berry
	Online course fee: \$20	

ART

ART211-01	Modern Art History: 19th Century Art in Europe & America	4
O LG	Online	Peterson
	Online course fee: \$20	

ART252-01	Ceramics I	3
	TDC 4.130 Tu Th 9:00-11:50am	Hoffman
	Instructional fee: \$37	

ART254A-01	Ceramics II-Studio	3
	TDC 4.130 Tu Th 9:00-11:50am	Hoffman
	Instructional fee: \$37	

ART286-01	Watercolor I	3
Z LG	Zoom M W 6:00-8:50pm	Anderson
	Instructional fee: \$37	

ART287A-01	Watercolor II-Studio	3
Z LG	Zoom M W 6:00-8:50pm	Anderson
	Instructional fee: \$37	

BIOLOGY

BI101-01	Biology	4
O LG	Online	McKeon
	Lab Fee: \$37 Online course fee: \$20	

BI121-01	Introduction to Human Anatomy and Physiology I	5
Lecture	Zoom Tu Th 8:30-10:20am	Burton
Lab	TDC 3.307 Tu 12:00-3:00pm	
Z	Lab Fee: \$37	

BI211-01	Principles of Biology	5
Lecture	Zoom M W 8:30-10:20am	Burton
Lab	HRC 109 M 12:00-2:50pm	
Z	Lab Fee: \$37	

BUSINESS ADMINISTRATION

BA104-01	Applied Business Math	4
O	Online	Hughitt
	Online course fee: \$20	

CHEMISTRY

CH121-01	General Chemistry I	5
Lecture	Online	Kovacich
Lab	Online	
O	Lab Fee: \$37 Online course fee: \$20	

COMPUTER APPLICATIONS & OFFICE SYSTEMS

CAS104-01	Basic Internet Skills	1
O LG	Online	Changar
	Online course fee: \$20	

CAS121-01	Beginning Keyboarding	3
O	Online	Olson
	Online course fee: \$20	

OS280F-01	Cooperative Education: Administrative Assistant	4
	TBD TBD TBD	Olson
	Must also register for OS280G	

OS280G-01	Cooperative Education: Administrative Assistant Seminar	1
Z HYB LG	Zoom Tu 5:00-6:20pm	Olson
	Online course fee: \$20 Class dates: 6/28 & 8/2 Must also register for OS280F	

O Online class
HYB Hybrid class
LAB Lab section included
pg 3 tuition and fees explanation

Course #	Title	# of credits
Codes	Location Days Time	Instructor
Additional fees other information		

COMMUNICATIONS

COMM111-01	Public Speaking	4
O LG	Online	Uto
	Online course fee: \$20	

COMM215-01	Small Group Communication: Process and Theory	4
Z HYB	Zoom F 9:00am-3:20pm	Uto
	Online course fee: \$20 Class dates: 7/8 & 8/5	

EARLY CHILDHOOD EDUCATION

ECE130B-01	Practicum Seminar 1	1
Z HYB LG	Zoom W 6:00-7:20pm	Cucuel
	Online course fee: \$20 Class dates: 6/29, 7/13, 7/27, 8/10, 8/24, 9/7	

ECE130C-01	Practicum Seminar 2	1
Z HYB LG	Zoom W 6:00-7:20pm	Cucuel
	Online course fee: \$20 Class dates: 6/29, 7/13, 7/27, 8/10, 8/24, 9/7	

ECE134-01	Practicum 1	2
LG	TBD TBD TBD	Cucuel

ECE135-01	Practicum 2	2
LG	TBD TBD TBD	Cucuel

ECE177-01	Multi-Age Groups	1
GO	TDC 3.327 F 6:00-9:00pm	Stafford
	Sat 9:00am-5:00pm	
	Class dates: 8/5-8/6	

ECE221-01	Observation, Documentation, & Assessment	3
O LG	Online	Cucuel
	Online course fee: \$20	

HEALTH & PHYSICAL EDUCATION

HPE295-01	Health and Fitness for Life	3
O LG	Online	Holdiman
	Online course fee: \$20	

MEDICAL PROFESSIONS

MP111-01	Medical Terminology	4
O	Online	Staff
	Online course fee: \$20	

MATHEMATICS

MTH95-01	Intermediate Algebra	4
Z GO	Zoom Tu Th 11:00am-1:20pm	Byers

MTH111-01	College Algebra	4
O LG	Online	Morse
	Online course fee: \$20	

MTH243-01	Statistics I	4
GO	HRC 309 Tu Th 5:00-7:20pm	Wolman

PHILOSOPHY

PHL201-01	Introduction to Philosophy: Philosophical Problems	4
O LG	Online	Kempf
	Online course fee: \$20	

PSYCHOLOGY

PSY201A-01	General Psychology	4
O LG	Online	Krummel
	Online course fee: \$20	

PSY215-01	Human Development	4
O LG	Online	Krummel
	Online course fee: \$20	

GO Gorge Open OER
LG Low-Go book < \$50
pg 12 codes explanation and additional information

Course #	Title			# of credits
Codes	Location	Days	Time	Instructor

Course #	Title			# of credits
Codes	Location	Days	Time	Instructor

SOCIOLOGY				
SOC205-01	Social Change in Societies			4
O LG	Online			Martinez
	Online course fee: \$20			

WRITING				
WR115-01	Introduction to Expository Writing			4
HYB LG	HRC 313	Tu	9:00-10:50am	Jablonski
	Online course fee: \$20			
WR121-01	College Composition			4
O LG	Online			Webster
	Online course fee: \$20			
WR122-01	Argumentative Writing			4
O LG	Online			Ware
	Online course fee: \$20			
WR227-01	Technical and Professional Writing			4
O LG	Online			Webster
	Online course fee: \$20			



Are you facing the daunting task of looking for a job?
We can help!

CGCC in partnership with WorkSource The Dalles and Hood River offer the following FREE workshops:

- Basic Computer Skills
- Excel
- Word
- Networking-Social Media
- Interviewing Skills
- Resume and Cover Letter Writing
- Soft Skills: What Employers Want
- Applications: How to Fill Them Out

To find the schedule, go to imatchskills.org and create an account. After that, please call (541) 386-6300 to complete your registration.

WorkSource Oregon is an equal opportunity employer/program. Auxiliary aids and services are available upon request to individuals with disabilities. Language assistance is available to persons with limited English proficiency at no cost.

College Bound!

A Fundraiser for CGCC Foundation

Your generosity ensures CGCC stays vital and accessible as the premier educational resource in The Gorge!

June 1-6, 2022

Join us virtually for the

CGCC Foundation College Bound

online auction!



To sponsor or donate to the auction, contact Wendy Patton at wpatton@cgcc.edu or call the Foundation (541) 506-6104.

www.cgccfoundation.org



CGCC Alumni Association

The Columbia Gorge Community College Alumni Association is here to assist you in maintaining a relationship with the college and connecting you with your fellow alumni. Our goal is to ensure your CGCC experience extends well beyond your graduation.

Whether you graduated with a degree or certificate – you are a CGCC Alum. If you attended before 2013 and your degree or certificate says PCC – you are a CGCC Alum.

We want to hear from you! Email Foundation@cgcc.edu with your news and information updates. Keep an eye out for upcoming Alumni Association news as we kick off 2022.

Donor Wall

A donor wall in the new skill center and we want your name on it!

Columbia Gorge Community College Foundation announces a \$2 million New Year's campaign to support career-technical education in the Columbia Gorge Regional Skills Center.

With Advanced Manufacturing and Metals Fabrication, Welding, Construction Technology and other family-wage skills training, Columbia Gorge Community College is poised to help meet our region's urgent shortage in the skilled trades workforce. But we need you to truly make a difference for students and our community in years to come.

Donor Wall Levels

- \$100,000+
- \$50,000 - \$99,999
- \$25,000 - \$49,999
- \$10,000 - \$24,999
- \$5,000 - \$9,999
- \$2,500 - \$4,999
- \$1,000 - \$2,499
- \$500 - \$999

COLLEGE-PREP | GED® | ESOL

COLLEGE-PREP COURSES

College-prep classes help students prepare for or improve scores on college placement tests, develop reading comprehension skills and strategies, renew or increase math skills, and develop writing composition and grammar skills. Students must be 16 years old or older **and** pursuing a GED®, or be 16 years old or older, have a high school diploma or GED® **and** be entering college. Students are required to attend a free Pre-College Success Orientation prior to attending classes. Please call (541) 506-6041 to sign-up.

Class dates: 9/26-12/9 | Tuition: \$25

The Dalles Classes (face-to-face)

ABE60-01 Pre-College Language Arts I: Science/Social Studies
TDC 1.361 M W 9:00-11:20am Booth

ABE80-01 Pre-College Math I
TDC 1.361 Tu Th 9:00-11:20am Harrington

Zoom Classes

ABE70-01 Pre-College Language Arts II: Science/Social Studies
Zoom M W 5:30-7:50pm Carmicheal

ABE75-01 Writing for College Preparation
Z/HYB Zoom Tu Th 8:00-8:50pm Carmicheal

ABE90-01 Pre-College Math II
Z Zoom Tu Th 5:30-7:50pm Carmicheal

ENGLISH FOR SPEAKERS OF OTHER LANGUAGES (CLASES DE INGLÉS)

The English for Speakers of Other Languages (ESOL) program offers classes for persons whose native language is not English. The program focuses on reading, writing, listening and speaking. For more information, call (541) 380-0947.

Class dates: 9/26-12/9 | Tuition: \$25

The Dalles Classes

ESOL10-01 ESOL - Level 1-2, Pre/Beginning Literacy
TDC 1.351 M W 6:00-8:20pm Staff

ESOL30-01 ESOL - Level 3, High Beginning
TDC 1.351 M W 6:00-8:20pm Staff

Hood River Classes

ESOL10-02 ESOL - Level 1-2, Pre/Beginning Literacy
HRC 203 Tu Th 6:00-8:20pm Ziegner

ESOL30-02 ESOL - Level 3, High Beginning
HRC 203 Tu Th 6:00-8:20pm Ziegner

ESOL40-01 ESOL - Level 4, Low Intermediate
HRC 302 Tu Th 6:00-8:20pm Staff

ESOL50-01 ESOL - Level 5, High Intermediate/Advanced
HRC 302 Tu Th 6:00-8:20pm Staff

GED® PREPARATION

CGCC offers classes to develop the skills necessary to pass the GED® tests and prepare students to enter college and/or the workforce. Students must be 16 years old or older and pursuing a GED®, or be 16 years old or older, have a high school diploma or GED® and be entering college. Students are required to attend a free Pre-College Success Orientation prior to attending classes. Please call (541) 506-6041 to sign up.

Class dates: 9/26-12/9 | Tuition: \$25

The Dalles Classes (face-to-face)

GED60-01 Pre-College Language Arts I: Science/Social Studies
TDC 1.361 M W 9:00-11:20am Booth

GED80-01 Pre-College Math I
TDC 1.361 Tu Th 9:00-11:20am Harrington

Zoom Classes

GED70-01 Pre-College Language Arts II: Science & Social Studies
Z Zoom M W 5:30-7:50pm Carmicheal

GED90-01 Pre-College Math II
Z Zoom Tu Th 5:30-7:50pm Carmicheal

ON SNAP?

We have big news!

Introducing...

SNAP Training & Employment Program (STEP)

Students on SNAP can receive:

- 1-on-1 Coaching
- Connection to local resources
- Tuition & Fees Help
- Textbooks & Tools
- Transportation & Gas Cards
- & so much more!

Contact us today!

Cell/Text: (541) 300-7709
kraymond@cgcc.edu
ged.cgcc.edu/step



FALL CREDIT CLASSES

Course #	Title	# of credits
Codes	Location Days Time	Instructor
Additional fees other information		

ANTHROPOLOGY

ATH101-01 O LG	Introduction to Physical Anthropology Online Online course fee: \$20	4 Berry
---------------------------------	---	-------------------

ART

ART102-01 O LG	Understanding the Visual Arts Online Online course fee: \$20	4 Peterson
---------------------------------	---	----------------------

ART212-01 O LG	Modern Art History: Early 20th Century Art Online Online course fee: \$20	4 Peterson
---------------------------------	--	----------------------

ART230-01 LG	Drawing I HRC 313 M W 1:00-3:50pm Instructional fee: \$37	3 Anderson
-------------------------------	--	----------------------

ART232A-01 LG	Drawing II - Studio HRC 313 M W 1:00-3:50pm Instructional fee: \$37	3 Anderson
--------------------------------	--	----------------------

ART252-01	Ceramics I TDC 4.130 Tu Th 9:00-11:50am Instructional fee: \$37	3 Hoffman
------------------	--	---------------------

ART254A-01	Ceramics II-Studio TDC 4.130 Tu Th 9:00-11:50am Instructional fee: \$37	3 Hoffman
-------------------	--	---------------------

BIOLOGY

BI122-01 Lecture	Introduction to Human Anatomy and Physiology II Zoom Tu Th 1:00-2:20pm	4 Burton
Lab	TDC 3.204 Th 9:00-11:50am	
Z	Lab Fee: \$37	

BI211-01 Lecture	Principles of Biology Zoom M W 8:30-10:20am	5 Burton
Lab	TDC 3.307 M 12:00-2:50pm	
Z LG	Lab Fee: \$37	

BI211-02 Lecture	Principles of Biology HRC 302 M W 8:30-10:20am	5 Miller
Lab	HRC 109 M 10:30am-1:20pm	
	Lab Fee: \$37	

BI231-01 Lecture	Human Anatomy and Physiology I Zoom Tu Th 8:30-9:50am	4 Andree
Lab	Zoom Th 10:00am-12:50pm	
Z LG	Lab Fee: \$37	

BI231-02 Lecture	Human Anatomy and Physiology I HRC 302 M W 12:00-1:20pm	4 Andree
Lab	HRC 109 M 1:30-4:20pm	
LG	Lab Fee: \$37	

BI231-03 Lecture	Human Anatomy and Physiology I HRC 302 M W 12:00-1:20pm	4 Andree
Lab	HRC 109 W 1:30-4:20pm	
LG	Lab Fee: \$37	

BI233-01 Lecture	Human Anatomy and Physiology III TDC 3.302 Tu Th 1:00-2:20pm	4 Andree
Lab	TDC 3.304 Tu 2:30-5:20pm	
LG	Lab Fee: \$37	

BI234-01 Lecture	Microbiology TDC 3.303 Tu Th 9:00-10:50am	5 Miller
Lab	TDC 3.307 Tu Th 11:00am-12:20pm	
	Lab Fee: \$37	

Course #	Title	# of credits
Codes	Location Days Time	Instructor
Additional fees other information		

BUSINESS ADMINISTRATION

CGCC is piloting a new format for all Business & Entrepreneurship courses. The new format allows students to choose - week to week - whether to participate in the live class face-to-face, via Zoom (synchronous) or online at another time (asynchronous). **Online participation includes a short weekly Zoom session with the instructor and other students - various days and times available.**

These two sections comprise a single FlexConnect course see note below header

BA101-01 O	Introduction to Business Online Online course fee: \$20 Weekly Zoom sessions required; see note below header	4 Finnerty
-----------------------------	---	----------------------

BA101-02 Z HYB	Introduction to Business Zoom M 6:00-7:50pm Online course fee: \$20	4 Finnerty
---------------------------------	--	----------------------

These three sections comprise a single FlexConnect course see note below header

BA104-01 O	Applied Business Math Online Online course fee: \$20 Weekly Zoom sessions required; see note below header	4 Meislahn
-----------------------------	--	----------------------

BA104-02 Z	Applied Business Math Zoom M W 3:00-4:50pm Online course fee: \$20	4 Meislahn
-----------------------------	---	----------------------

BA104-03	Applied Business Math TDC 3.101 M W 3:00-4:50pm Online course fee: \$20	4 Meislahn
-----------------	--	----------------------

These three sections comprise a single FlexConnect course see note below header

BA111-01 O	Introduction to Accounting & Finance Online Online course fee: \$20 Weekly Zoom sessions required; see note below header	3 Meislahn
-----------------------------	---	----------------------

BA111-02 Z	Introduction to Accounting & Finance Zoom W 6:00-8:50pm Online course fee: \$20	3 Meislahn
-----------------------------	--	----------------------

BA111-03	Introduction to Accounting & Finance TDC 3.101 W 6:00-8:50pm Online course fee: \$20	3 Meislahn
-----------------	---	----------------------

These three sections comprise a single FlexConnect course see note below header

BA150-01 O	Introduction to Entrepreneurship Online Online course fee: \$20 Weekly Zoom sessions required; see note below header	4 Davis
-----------------------------	---	-------------------

BA150-02 Z HYB	Introduction to Entrepreneurship Zoom Tu 6:00-7:50pm Online course fee: \$20	4 Davis
---------------------------------	---	-------------------

BA150-03 HYB	Introduction to Entrepreneurship TDC 3.101 Tu 6:00-7:50pm Online course fee: \$20	4 Davis
-------------------------------	--	-------------------

These three sections comprise a single FlexConnect course see note below header

BA211-01 O	Principles of Accounting I Online Online course fee: \$20 Weekly Zoom sessions required; see note below header	4 Meislahn
-----------------------------	---	----------------------

BA211-02 Z	Principles of Accounting I Zoom Tu Th 3:00-4:50pm Online course fee: \$20	4 Meislahn
-----------------------------	--	----------------------

BA211-03	Principles of Accounting I TDC 3.101 Tu Th 3:00-4:50pm Online course fee: \$20	4 Meislahn
-----------------	---	----------------------

Course #	Title	# of credits
Codes	Location Days Time	Instructor

Additional fees | other information

These two sections comprise a single FlexConnect course see note below BA header

BA224-01	Introduction to Human Resource Management	3
O	Online Finnerty Online course fee: \$20 Weekly Zoom sessions required; see note below BA header	
BA224-02	Introduction to Human Resource Management	3
Z	Zoom Th 6:00-8:50pm Finnerty Online course fee: \$20	

CAREER GUIDANCE & COLLEGE SUCCESS

CG101-01	College Survival and Success: Personal Responsibility	1
Z LG	Zoom M 9:00-9:50am Brackenbury	
CG114-01	Financial Survival for College Students	1
Z	Zoom M 10:00-10:50am Brackenbury	

CHEMISTRY

CH121-01	General Chemistry I	5
Lecture	TDC 3.204 M W 9:00-10:50am Kovacich	
Lab LG	TDC 3.204 M 11:00am-1:50pm Lab Fee: \$37	

COMMUNICATIONS

COMM111-01	Public Speaking	4
O LG	Online Uto Online course fee: \$20	
COMM140-01	Introduction to Intercultural Communication	4
O LG	Online Uto Online course fee: \$20	

COMPUTER APPLICATIONS & OFFICE SYSTEMS

CAS108-01	Beginning Photoshop	3
O	Online Ware Online course fee: \$20	
CAS121-01	Beginning Keyboarding	3
O	Online Olson Online course fee: \$20	
CAS134-01	Introduction to Google Drive	3
O LG	Online Hughitt Online course fee: \$20	

These three sections comprise a single FlexConnect course see note below Business Administration header

CAS170-01	Beginning Spreadsheets using Excel	3
O LG	Online Changar Online course fee: \$20 Weekly Zoom sessions required; see note below header	
CAS170-02	Beginning Spreadsheets using Excel	3
Z HYB LG	Zoom W 6:00-8:50pm Changar Online course fee: \$20	
CAS170-03	Beginning Spreadsheets using Excel	3
HYB LG	HRC 309 W 6:00-8:50pm Changar Online course fee: \$20	

OS131-01	10-Key for Business	1
O	Online Hughitt Online course fee: \$20	

CONSTRUCTION TECHNOLOGY

CT101-01	Tools and Shop Safety	3
	TDC 5.110 M Tu 9:00-11:50am Wood Lab Fee: \$250	
CT102-01	Footings and Foundations	3
	TDC 5.110 W Th 9:00-11:50am Wood Lab Fee: \$250	
CT103-01	Building Materials and Methods	3
	TDC 5.110 M Tu 1:00-3:50pm Wood Lab Fee: \$250	
CT104-01	Floor Framing	3
	TDC 5.110 W Th 1:00-3:50pm Wood Lab Fee: \$250	

O Online class **LAB** Lab section included
HYB Hybrid class **pg 3** tuition and fees explanation

Course #	Title	# of credits
Codes	Location Days Time	Instructor

Additional fees | other information

EARLY CHILDHOOD EDUCATION

ECE101-01	Exploring the ECE Field	1
Z HYB LG	Zoom W 6:00-7:20pm Cucuel Online course fee: \$20 Class dates: 9/28, 10/12, 10/26, 11/9, 11/23, 12/7	
ECE120-01	Introduction to Early Childhood Education	3
Z HYB LG	Zoom Th 6:00-7:20pm Staff Online course fee: \$20	
ECE126-01	Early Childhood Development: Birth to Age 8	3
HYB	TDC 3.327 M 6:00-7:20pm Shope Online course fee: \$20	
HE262-01	Children's Health, Nutrition & Safety	3
O	Online Shope Online course fee: \$20	
HEC226-01	Child Development	4
O LG	Online Cunningham Online course fee: \$20	

EDUCATION

ED101-01	Teachers Make a Difference: Exploring the K-5 Classroom	1
Z HYB	Zoom W 12:00-12:50pm Brackenbury Online course fee: \$20	
ED216-01	Purpose, Structure, & Function of Education in a Democracy	3
O	Online Cunningham Online course fee: \$20	

ELECTRO-MECHANICAL TECHNOLOGY

EET111-01	DC Circuits	5
Lecture	TDC 10.105 M 9:00-11:50am Pytel	
Lab	TDC 10.119 W 9:00-11:50am	
HYB	Lab Fee: \$250 Online course fee: \$20	
EET221-01	Semiconductor Devices and Circuits	5
Lecture	TDC 10.107 M W 8:00-9:50am Brunton	
Lab	TDC 10.117 W 10:00am-12:50pm Lab Fee: \$250	
EET251-01	Digital Electronics 1: Programmable Logic Devices	5
Lecture	Online Spengler	
Lab	TDC 10.117 M 1:00-3:50pm	
HYB	Lab Fee: \$250 Online course fee: \$20	
MEC123-01	Industrial Mechanical Systems	5
Lecture	TDC 10.105 Tu Th 9:00-10:50am Spengler	
Lab	TDC 11 Tu 11:00am-1:50pm Lab Fee: \$250	
RET223-01	Power Generation	5
Lecture	Online Pytel	
Lab	TDC 10.106 Tu Th 9:00-10:20am	
HYB	Lab Fee: \$250 Online course fee: \$20	
SAF188-01	Industrial Safety and OSHA 10	1
GO	TBD OSHA Class dates: 9/30 & 10/1	

EMERGENCY MEDICAL SERVICES

EMS105-01	EMT Part 1	6
	TDC 1.454 Tu Th 5:30-7:50pm Adams	
	Lab fee: \$500 Also includes occasional Saturdays, dates TBD Mandatory orientation 9/23 5:30-9:30pm Room 1.454	

ENGLISH

ENG104-01	Introduction to Literature - Fiction	4
O	Online Hancock Online course fee: \$20	
Online registration not available for this course.		
ENG203-01	Introduction to Shakespeare	4
HYB	HRC 302 Tu 9:00-10:50am Jablonski Instructional fee: \$99 Online course fee: \$20 Includes a required field trip to Oregon Shakespeare Festival. Orientation HRC 302, Tu, 10/4, 5:00-6:00pm. Instructional fee is nonrefundable after 9/14. See cgcc.edu/shakespeare for application and details.	

GO Gorge Open OER **pg 14** codes explanation and additional
LG Low-Go book < \$50 information

Course #	Title	# of credits
Codes	Location Days Time	Instructor
Additional fees other information		

ENVIRONMENTAL SCIENCE

ESR171-01	Environmental Science: Biological Perspectives	4
Lecture	Zoom Tu Th 3:00-4:20pm	Burton
Lab	HRC 109 Tu 5:00-7:50pm	
LG	Lab Fee: \$37	

GENERAL SCIENCE

GS106-01	Physical Science(Geology)	4
Lecture	Online	Gebhardt
Lab	TDC 3.207 Th 2:00-4:50pm	
HYB LG	Lab fee: \$37 Online course fee: \$20 Mandatory all day field trip (choose one): 10/15 Mt. St. Helens or 10/22 The Gorge & Mt. Hood. Students must provide own transportation.	

GEOLOGY

G208-01	Volcanoes and Their Activity	3
HYB LG	HRC 302 Sat see note	Gebhardt
	Online course fee: \$20 Mandatory orientation: Sat, 10/8, 9:00-11:50am, HRC 302; Two mandatory all day field trips, Sat 10/15 Mt. St. Helens & Sat 10/22 The Gorge & Mt. Hood. Students must provide own transportation.	

HEALTH

HE113-01	First Aid & CPR/AED Professional Rescuers/ Healthcare Providers	1
LG	TDC 1.454 F 8:30am-6:20pm	Adams
	Instructional Fee: \$40 Class date: 9/30	

HEALTH & PHYSICAL EDUCATION

HPE295-01	Health and Fitness for Life	3
O LG	Online	Holdiman
	Online course fee: \$20	

HISTORY

HST201-01	History of the United States to 1840	4
O LG	Online	Copp
	Online course fee: \$20	

MANUFACTURING

MFG150-01	Manufacturing Processes	3
	TDC 5.112 Tu Th 8:00-10:50am	Wells-Clark
	Lab Fee: \$250	
MFG155-01	Blueprint Reading	3
	TDC 5.112 Tu Th 11:00am-1:50pm	Wells-Clark
	Lab Fee: \$250	
MFG195-01	Welding Technology I	3
	TDC 5.112 Tu Th 2:30-5:20pm	Wells-Clark
	Lab Fee: \$250	

MATHEMATICS

MTH65-01	Beginning Algebra II	4
GO	HRC 310 M W 9:00-11:20am	Morse
MTH95-01	Intermediate Algebra	4
GO	HRC 310 M W 1:00-3:20pm	Morse
MTH95-02	Intermediate Algebra	4
GO	TDC 3.327 Tu Th 9:00-11:20am	Byers
MTH98-01	Quantitative Math	4
Z LG	Zoom M W 9:00-10:50am	Byers
MTH110-01	Technical Math	4
GO	TDC 10.105 M W 2:00-3:50pm	Wolman
MTH111-01	College Algebra	4
LG	HRC 310 Tu Th 12:00-2:20pm	Morse
MTH111-02	College Algebra	4
LG	TDC 3.202 M W 10:00am-12:20pm	Evans
MTH111L-01	Foundations of College Algebra	1
LG	HRC 311 Tu Th 3:00-4:20pm	Wolman
	Note: you must also be registered for MTH 111 to register for MTH 111L	
MTH211-01	Foundations of Elementary Mathematics I	4
Z	Zoom M W 3:00-4:50pm	Byers

O Online class **LAB** Lab section included
HYB Hybrid class **PG 3** tuition and fees explanation

Course #	Title	# of credits
Codes	Location Days Time	Instructor
Additional fees other information		

MTH243-01	Statistics I	4
GO	HRC 311 Tu Th 12:00-2:20pm	Wolman
MTH243-02	Statistics I	4
GO	TDC 3.202 M W 2:00-4:20pm	Evans
MTH243L-01	Foundations of Statistics	1
GO	TDC M W 12:00-1:20pm	Evans
	Note: you must also be registered for MTH243 to register for MTH243L	
MTH251-01	Calculus I	5
	TDC 3.202 Tu Th 10:00am-12:20pm	Evans
MTH252-01	Calculus II	5
	HRC 311 Tu Th 5:00-7:20pm	Wolman

MEDICAL ASSISTING—LIMITED ENTRY

MA112-01	Medical Office Assistant 1	1
	TDC 1.464 M 2:00-2:50pm	Pentz
	Instructional Fee: \$85	
MA117-01	Medical Office Administrative Procedures	3
	TDC 1.464 M 10:30am-12:20pm & 1:00-1:50pm	Pentz
	Instructional Fee: \$85	
MA118-01	Medical Office Administrative Procedures Lab	2
O	Online	Pentz
	Instructional Fee: \$150 Online course fee: \$20	
MP140-01	Introduction to Health Law and Ethics	3
O	Online	Pentz
	Instructional fee: \$85 Online course fee: \$20	

MEDICAL PROFESSIONS

MP111-01	Medical Terminology	4
O	Online	Houck
	Online course fee: \$20	

NURSING ASSISTANT

NUR90-01	Nursing Assistant 1	9
Lecture & Lab	TDC 1.454 Th F 8:30am-5:00pm	Hill/Staff
Clinical	TBA F Sat 6:00am-2:30pm	Staff
	Lab fee: \$400 Class dates: 9/29-10/28 Mandatory Orientation: 9/23 1:00-4:00pm TDC 3.301	

NURSING—LIMITED ENTRY

NRS110-01	Foundations of Nursing - Health Promotion	9
	TDC 1.454 M-F Variable	Staff/Staff
	Program Fee: \$1190	
NRS221-01	Nursing in Chronic Illness II and End-of-Life Care	9
	TDC 3.328 M-F Variable	Bailey/White
	Program Fee: \$1087	
NRS232-01	Pathophysiological Processes I	3
	TDC 1.454 Tu 8:30-11:20am	Staff/Staff
	Program Fee: \$100	

NUTRITION

FN225-01	Nutrition	4
O LG	Online	Holdiman
	Online course fee: \$20	

PHILOSOPHY

PHL202-01	Introduction to Philosophy: Elementary Ethics	4
O LG	Online	Kempf
	Online course fee: \$20	

PHYSICAL EDUCATION

PE182J-01	Gentle Yoga	1
LG	TDC 5.109 Tu Th 6:00-7:20pm	Chrisman
	Lab Fee: \$37	

POLITICAL SCIENCE

PS201-01	US Government I	4
Z GO	Zoom Tu Th 11:00am-12:50pm	Copp

GO Gorge Open OER **PG 14** codes explanation and additional information
LG Low-Go book < \$50

Course #	Title	# of credits
Codes	Location Days Time	Instructor
Additional fees other information		

PSYCHOLOGY

PSY101-01	Psychology and Human Relations	4
LG	TDC 3.203 Tu Th 11:00am-12:50pm	Krummel
PSY201A-01	General Psychology	4
O LG	Online	Krummel
	Online course fee: \$20	
PSY202A-01	General Psychology	4
O LG	Online	Kane
	Online course fee: \$20	
PSY215-01	Human Development	4
HYB LG	HRC 302 M 5:30-8:20pm	Krummel
	Online course fee: \$20	

SOCIOLOGY

SOC204-01	Sociology in Everyday Life	4
O LG	Online	Martinez
	Online course fee: \$20	

SPANISH

SPA101-01	First Year Spanish - First Term	4
	HRC 313 M W 5:00-6:50pm	Huszar

UNMANNED AIRCRAFT SYSTEMS

UAS100-01	UAS Flight Training	3
LG	TDC Bldg 10 Su 8:00-11:50am	McCabe
	Drill Floor	

WRITING

WR115-01	Introduction to Expository Writing	4
HYB LG	HRC 312 W 11:00am-12:50pm	Herrada-Nance
	Online course fee: \$20	
WR115-02	Introduction to Expository Writing	4
LG	TDC 3.301 Tu Th 11:00am-12:50pm	Herrada-Nance
WR121-01	College Composition	4
HYB LG	HRC 313 Tu 11:00am-12:50pm	Kamrar
	Online course fee: \$20	
WR121-02	College Composition	4
HYB LG	TDC 3.301 M 9:00-10:50am	Kamrar
	Online course fee: \$20	
WR121-03	College Composition	4
O LG	Online	Herrada-Nance
	Online course fee: \$20	
WR122-01	Argumentative Writing	4
HYB LG	HRC 312 Tu 11:00am-12:50pm	Ontiveros
	Online course fee: \$20	
WR122-02	Argumentative Writing	4
HYB LG	TDC 3.301 W 1:00-2:50pm	Hancock
	Online course fee: \$20	
WR227-01	Technical and Professional Writing	4
O LG	Online	Ontiveros
	Online course fee: \$20	

O Online class
HYB Hybrid class
LAB pg 3 Lab section included tuition and fees explanation

Course #	Title	# of credits
Codes	Location Days Time	Instructor
Additional fees other information		

CGCC is piloting a new course delivery format. This new format allows students to choose - week to week - whether to participate in the live class face-to-face or via Zoom. These two sections comprise a single FlexConnect course.

These two sections comprise a single FlexConnect course see note above

WR241-01	Creative Writing - Fiction	4
Z GO	Zoom M W 3:00-4:50pm	Ontiveros
WR241-02	Creative Writing - Fiction	4
GO	TDC 3.301 M W 3:00-4:50pm	Ontiveros

These two sections comprise a single FlexConnect course see note above

WR244-01	Advanced Creative Writing - Fiction	4
Z GO	Zoom M W 3:00-4:50pm	Ontiveros
WR244-02	Advanced Creative Writing - Fiction	4
GO	TDC 3.301 M W 3:00-4:50pm	Ontiveros

WOMEN AND GENDER STUDIES

WGS101-01	Women's and Gender Studies	4
HYB LG	HRC 311 W 5:00-7:10pm	Webster
	Online course fee: \$20 Class dates: 9/28, 10/12, 10/26, 11/9, 11/23, 12/7	



Oregon State University Extension Service

Serving You Locally in Wasco and Hood River Counties
 Providing educational outreach for Oregon State University

Offering expertise through educational programs in:

- Agriculture
- Master Gardeners
- 4-H Youth Development
- Small Farms Counseling
- Master Food Preservers
- Strong Women, Strong Bones
- Open Campus Enrollment Coaching
- Family and Community Health

Check out our website or call our office for information on programs in your community!

In Wasco County: 541-296-5494;
extension.oregonstate.edu/wasco/

In Hood River County: 541-386-2030;
extension.oregonstate.edu/hoodriver/

GO Gorge Open OER
LG Low-Go book < \$50
pg 14 codes explanation and additional information

**COLUMBIA GORGE COMMUNITY COLLEGE &
PHI THETA KAPPA WELCOME YOU TO**

**THE
CHINOOK
CAMPUS
PANTRY**



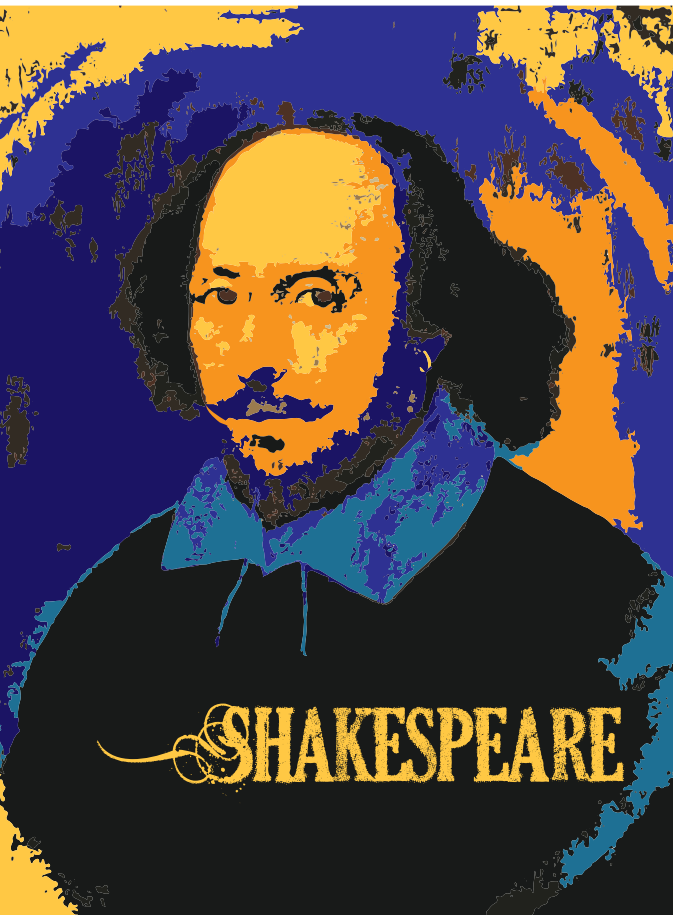
Frozen and dry good pantry items vary weekly with a rotation of fresh produce, milk, and bread.

**EVERY WEDNESDAY & THURSDAY
2-5 PM IN BUILDING 4**

The Chinook Campus Pantry is a program of the Columbia Gorge Food Bank, a transitional program of Oregon Food Bank.

For more information,
contact campuspantry@cgcc.edu

Coming Fall Term! ENG 203: Introduction to Shakespeare and Oregon Shakespeare Festival Experience



Are you interested in deepening your understanding of Shakespeare's works? Would you like to travel to beautiful Ashland, Oregon October 13-15, 2022 for the Oregon Shakespeare Festival (OSF) and enjoy a weekend of plays, discussions and other exclusive OSF experiences, including a backstage tour?

If so, contact ENG 203 instructor, Katy Jablonski at mjablonski@cgcc.edu, to learn more about the experience.

There are a limited number of spaces for this course and field trip opportunity, so don't wait! This experience will broaden your intellectual understanding of *The Tempest*, *King John*, and *Cymbeline* as well as other works. Don't hesitate to apply. Financial aid funds can be used for the \$99 instructional fee.

Contact and registration information are available at: <https://www.cgcc.edu/shakespeare>

Faculty Profile: Kalie Brunton

For most people, “Back to School” means a return from a summer vacation. For Kalie Brunton, it means returning to the place she learned her trade—but this time, as a teacher. Brunton teaches in CGCC’s Electro-Mechanical Technology (EM-Tech) program, and recently became a full-time instructor, after initially joining the CGCC team as an adjunct last year.

Brunton grew up in White Salmon, where her favorite classes were metal and wood shop. She enrolled in the Running Start program as a junior and began taking classes at CGCC. At that time, CGCC offered a “Renewable Energy Technology” program, which has since developed into EM-Tech. After two years, she graduated with an Associate of Applied Science and got a job with GE as a wind turbine technician. That job took her to Central Oregon.

“I spent five years learning to maintain and repair wind turbines. Training new employees eventually became one of my favorite parts of the job,” Brunton says. “I knew I ultimately wanted to end up in some type of training capacity.”

Last year, Brunton took a one-year position with the US Army Corps of Engineers (USACE) at Bonneville Lock & Dam. Returning to the Gorge meant reconnecting with people from CGCC, and when her Bonneville job was winding down, Brunton pursued an open position on the EM-Tech faculty.

“My employment opportunities with GE and USACE were only accessible to me because of the education and skills I received here at CGCC. I am excited to be part of an educational program that directly prepares students for stimulating, high-paying careers in technology and trades. I see CGCC’s EM-Tech program as continuing to evolve in response to the needs of industry, with the goal of training competent workers and connecting them with jobs in technology.”



Brunton, Left as a student in 2012, and Right as a teacher in 2022.

James Pytel, one of Kalie’s former teachers, speaks highly of her transition from student to colleague. “Kalie immediately distinguished herself as a student in the EM-Tech program as not only being technically proficient and disciplined but also capable of working with people with wide varieties of skill sets and attitudes,” Pytel said. “She is a natural instructor and we’re very proud to have her assistance in modernizing the program.”

Technical fields can be tough, but Brunton says she had mentors along the way who helped her find her path. “It proved invaluable to me to find people whose career and life paths mirrored what I wanted for myself,” she says. Her advice for students in a similar position is “to communicate with their instructors, get connected with their fields of interest, and seek out a mentor or two in that field to help shape their educational path.”

When she’s not educating, Brunton loves long-distance backpacking, and calls her “wildest trip to date” a 2017 excursion to Mt. Annapurna base camp in Nepal. But she’s happy, for now, to be back in the Gorge and teaching.

“I have been pursuing teaching for a couple of years, and so becoming part of the CGCC team has actually fulfilled a personal goal I’ve had for some time,” she says. “I enjoy the kind of work my education at CGCC has allowed me to do – I love coming upon something broken, and walking away having fixed it. But now, I’m thrilled to be able to train others to do the same thing.”

Columbia Gorge Community College

cgcc.edu

400 East Scenic Drive | The Dalles | OR | 97058

1730 College Way | Hood River | OR | 97031

RESIDENTIAL CUSTOMER ONLY

LIVE ON CAMPUS!

Ready to start your next journey?

- Affordable housing!
- No commute
- Meal plans included
- Sign up now for fall term

Each suite includes two bedrooms, bathroom, and living room. The building also includes common living areas, laundry, shared kitchen, and quiet study room.



Live here!

Apply today, or contact us for a tour!

Questions? Contact the Director of Housing & Student Life at (541) 506-6013 or email tprince@cgcc.edu

